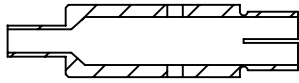
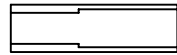


Parts list

P.N. 111025



1. Body



2. PEEK Insulator



3. SS Wire Sleeve



4. Contact Socket



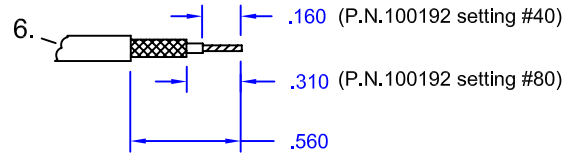
5. Short CKT shield

P.N. 100720



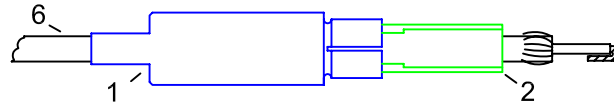
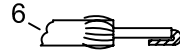
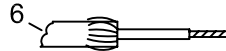
6. TYP 6 Kapton Coaxial

Cable Prep.

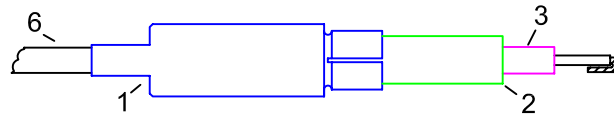


Connector Installation

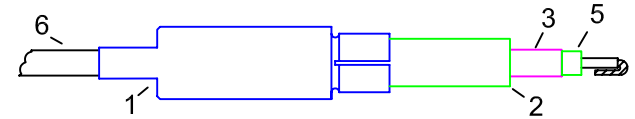
1. Prepare cable to above spec's.
2. Fold back shield over outer kapton.
3. Fold back center conductor over inner kapton. Space out loosely around kapton.
4. Slide body (#1) and PEEK Insulator (#2) onto wire. Large I.D. facing out.



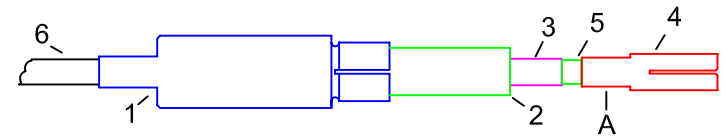
5. Slide stainless steel wire sleeve (#3) over outer shield.



6. Slide short CKT shield (#5) onto wire, back to the SS wire sleeve (#3)

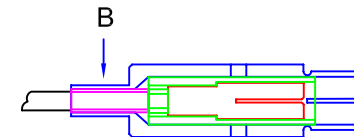


7. Slide Contact Socket (#4) onto the wire as shown. Use hex crimp tool P.N. 100908 size B to crimp in location A.



* Caution: Do not move SS wire sleeve (#3). If this comes off of the shield, it is very difficult to get this back into place.

8. Slide PEEK Insulator (#2) and body (#1) over and up to items (#3), (#4), and (#5). Check Socket location. Use hex crimp tool P.N.100908 size B to crimp location B.



9. Clean with ultrasonic bath of Isopropyl Alcohol for 5 minutes min.

Tools list

Available at www.accuglassproducts.com

P.N. 100908 Hex crimp tool
P.N. 100192 Wire Stripper

Notes



Accu-Glass Products Inc.
700 Arroyo Ave.
San Fernando, CA. 91340
TEL. 818-365-4215
FAX. 818-365-7074

Material

Title

AF375 Assembly Instructions

Tolerances unless otherwise specified
Decimal Angular
.xx= +/- .005 +/- 1°
.xxx= +/- .002

Drawn By	M.Wilson	DWG NO.	A111025	Date	4-3-08
Approved			SHEET		